



REDEFINE THE WAY OF LIFE



USER MANUAL

MODEL	RCH-SIROCCO XR-BL
SERIAL NO.	

COOKER HOOD

READ & SAVE THIS INSTRUCTIONS MANUAL

CONTENTS

SPECIFICATIONS -----	3
PRODUCT DIMENSION -----	3
OPERATING INSTRUCTIONS -----	4
INSTALLATION REQUIREMENT -----	5
INSTALLATION PROCEDURES -----	6
MAINTENANCE (installation of charcoal filter) -----	7
IMPORTANT SAFETY INSTRUCTIONS -----	9
TROUBLE SHOOTINGS -----	11
WARRANTY CARD -----	12

Dear Valued Customer,

Congratulations and thanks for trusting RUBINE to be part of your kitchen appliances. This appliance is subject to strict Quality Control during the entire process of manufacturing and assembly. It is meticulously tested to ensure lowest defect possible when it is working in your kitchen. Do not remove the product from its protective packaging until it is installed.

Please read and understand the instruction carefully before proceeding to install and use the appliances. The information contained in these manual is essential for proper operation of the appliance and, more importantly, for your safety. Being socially and environmentally responsible, the packaging of the appliance has been manufactured using only the materials which are strictly necessary to guarantee efficient protection during transport.

To contribute to the environment, you can dispose the packaging into the appropriate recycling bin. You can contact your local authority to find out the nearest recycling centre for your old product. Do not pour used oil down the sink; instead, collect in sealed container and take it to an appropriate oil disposal centre to avoid ground water contamination.

IMPORTANT: The quality of the final product is recorded according to the serial number. In the unlikely event that the appliance should be damaged or not meet your expectations in terms of quality, please inform us as soon as possible. For the warranty to be valid, the appliance must not have been tampered with, or used inappropriately.

SPECIFICATIONS

Model Name : RCH-SIROCCO XR-BL

Total Power : 254W

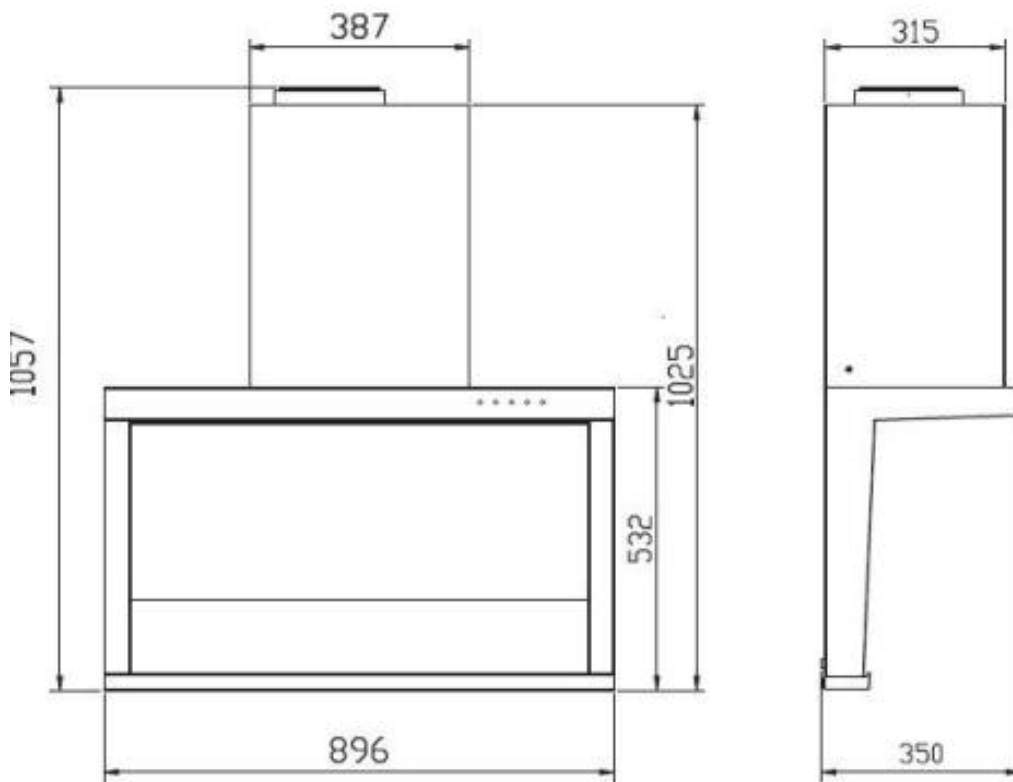
Motor Power : 250W

LED Lamp : 4Wx1

Voltage : 220V – 240V

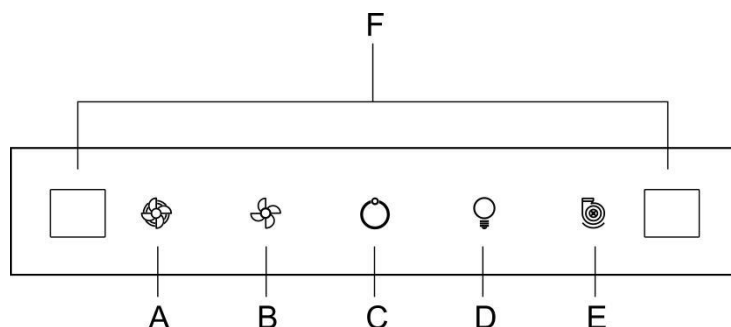
Frequency : ~50Hz

PRODUCT DIMENSION



OPERATION INSTRUCTION

This is a highly sensitive touch control. Gently press the control to operate.



A	B	C	D	E	F
X-Boost	Low/ High Suction Speed	On/Off	Light	H ² Meltz	Smart Sensor

- 1) In the shutdown mode, touch 'On/Off' to enter standby mode.
- 2) In the standby mode,
 - a. press 'Low/ High Speed' to run the hood in normal suction speed or high suction speed.
 - b. press 'X-boost' to boost-up the suction speed of the hood

Note: the running time of 'X-boost' is 3 minutes, then will switch to 'high suction speed'.

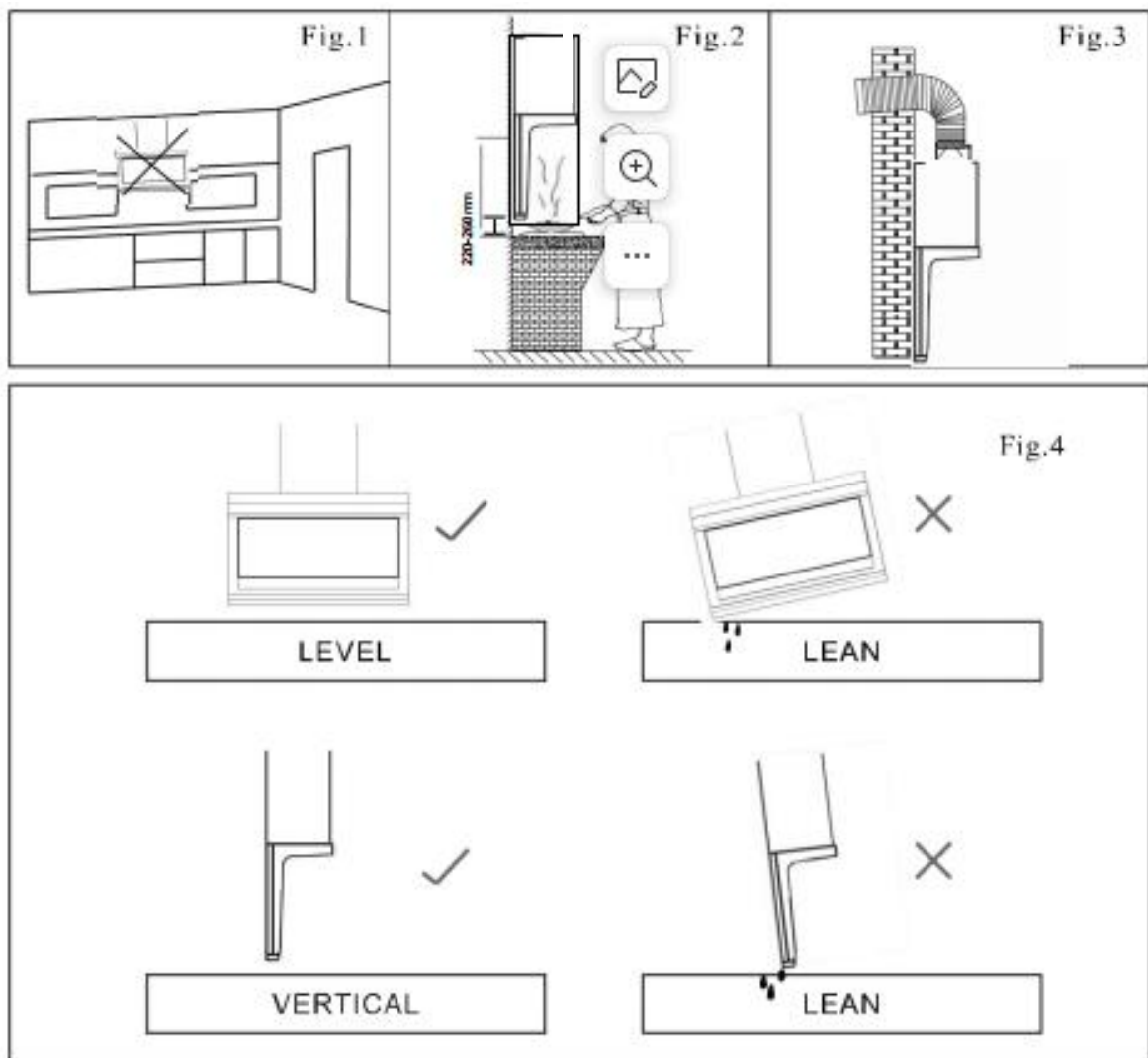
- 3) During 'X-boost' or 'High/Low speed' mode, touch 'On/Off' to activate delay shut-down. During process of delay shut-down, touch 'On/Off' again will directly stop the cooker hood & entering shut-down.
- 4) In any mode, touch the 'Light' key to turn the light on/off.
- 5) For H²Meltz: during standby mode, press 'H²Meltz' for 5sc to activate H²Meltz process. The process will operate for total 10-minute. During 1st 9-minute, hood motor will not operate, the hood entering 'heating' mode. Once heating process end (9-minute), hood motor will activate for cooling purposes.
(During H²Meltz process, only 'H²Meltz' key & 'Light' key is enabled (others key disable. To stop 'H²Meltz' process, press 'H²Meltz' key for 5sc.

- 6) For Smart Motion Sensor:
 - 1st wave from left to right: Hood operate in high suction speed
 - Continuous wave from left to right: Hood operate in X-boost
 - Continuous wave from left to right: Hood operate in low suction speed
 - Wave from right to left: Hood will activate delay shut-down
 - Another wave from right to left: Hood will activate direct shut-down.

Note: The default waving function is turned on. During standby mode, press the 'Light' key to enable/ disable 'Smart Motion Sensor'.

INSTALLATION REQUIREMENT

1. To have the best suction results, do not install cooker hood near to door and windows. External wind will reduce the efficiency of the appliance. (Fig. 1)
2. Install cooker hood directly above the hob. The optimum distance between the cooker hood and hob is 220mm to 260mm. (Fig. 2)
3. For best performance, minimize the length of the exhaust pipe, minimize the number of angles and do not over-bend the pipe more than 90 degree. (Fig. 3)
4. Ensure the cooker hood is vertically straight after installation. (Fig. 4)
5. The air outlet MUST NOT be connected to chimney flues or combustion gas ducts. DO NOT connect the air outlet to ventilation duct which fuel-burning appliances are installed.



INSTALLATION PROCEDURES

SAFETY WARNING

Some parts of the hood may have very sharp edges. Please wear protective gloves if you need to remove any parts during installation, cleaning or servicing. Make sure the wall is able to hold/ withstand the weight of cooker hood. It should not have contact with any cable inside/ outside to avoid electric shock. Do refer your hob user manual for any special requirement.

Step 1:

Install the cooker hood according to the recommended distance between 220 mm to 260 mm above the hob.

Step 2:

Drill holes on the proper positions of the wall, insert the provided expanding tubes into the holes. Tighten the screw into the holes and ensure it is tightly screwed. Hang the cooker hood on the bracket and ensure its stability and level.

Step 3:

Fix the exhaust pipe into the air outlet of the inner duct. It has to be tightly connected.

Step 4:

- a.) Adjust the desired height of the inner duct and draw 2 markings against the bracket holes.
- b.) Put the inner duct aside and drill the holes, then insert the expanding tube into the holes.
- c.) Place the inner duct on the wall and tighten it with screw when the holes of the wall and bracket are aligned.

Step 6:

Extend the air outlet exhaust pipe outdoor.

MAINTENANCE

To ensure efficiency & product lifespan, clean the cooker hood surface & fan regularly.

Before any cleaning & maintenance, make sure the cooker hood is turned-off and unplugged.

Wear glove to avoid scratch during maintenance.

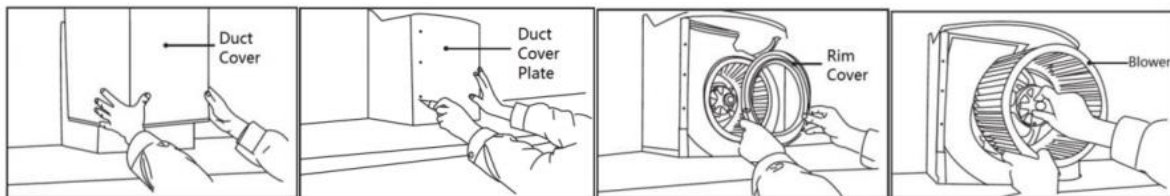
Use mild soap or detergent solution to clean the surface once a week depending on the usage

Motor fans and other internal part should be cleaned twice a week, depending on usage. This should be conducted by Qualified personnel only. Do not clean the motor with water or others liquid.

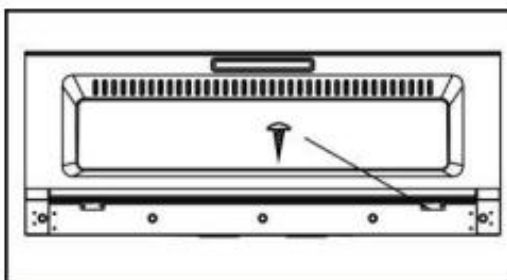
Dismantle the motor fan/ blower & charcoal filter installation

Please make sure the components are place gently after dismantle to avoid any dented to the component.

- Unscrew (screw located at behind) & take out the duct cover.
- Unscrew & take out the duct cover plate.
- You can install the charcoal filter here. Cover the blower.
- Unscrew & take out the rim cover.
- Turn the lock on the blower according to the indicate direction & take out the blower.
- After clean the blower & wipe the motor, install the blower back to the hood.

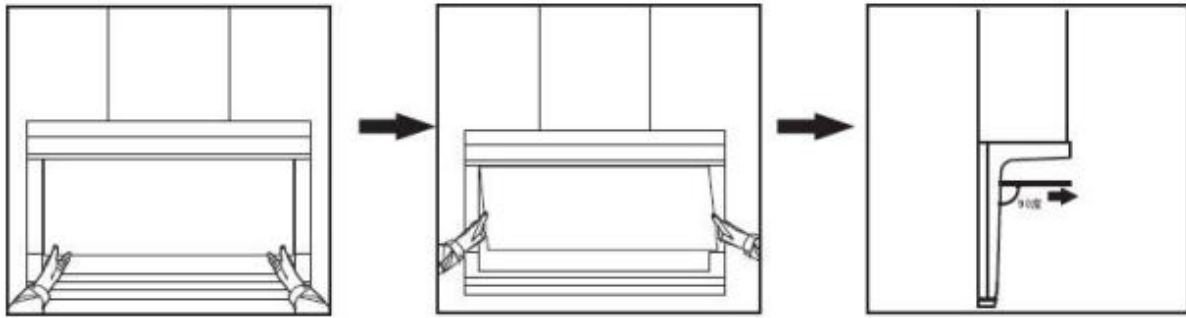


REMOVAL OF FLIP WINDOW/COVER



Kindly remove the oil cup, then remove the screw. Then, grab the glass with both of your hand, then move-up the glass to remove the glass from the hood.

REMOVAL OF FRONT GLASS PANEL



1. With both hands at the bottom, pull out the front glass panel (which will detach the lock panel on the hood). Pull it up until reaching the nut (the nut located at the left of the hood), then press the nut & continuously open the glass panel until 90 degrees. Lastly, pull it out & you will have the front glass panel out from the hood.

Washing of the component

Use mild soap or detergent solution to clean the component. Do not use organic solvents.

Soak it for 30 minutes before wash. Make sure to avoid any damages to the component. After clean it with mild soap or detergent solution, wash it again with water & wipe it with dry cloth. Only use dry cloth to clean electrical components, do not use water or any soap on it.

Replace & dismantle of Led Lamp

Caution: Hot surface! To replace or dismantle the lamp, make sure it is turned-off and unplugged.

- Use a flat head screwdriver to pull out the lamp subassembly.
- Pull out the connection with internal wires.
- Replace with new lamp.
- Connect the lamp subassembly with internal wires and push the lamp into the hood.

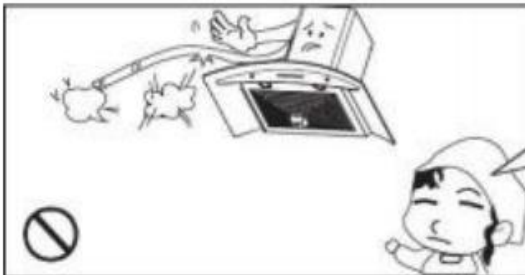
IMPORTANT SAFETY INSTRUCTIONS:



Do not connect the air outlet to chimney flues or combustion gas ducts.



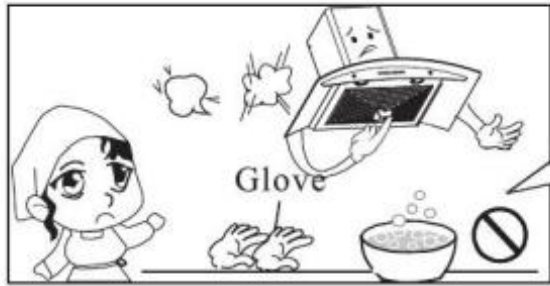
Do not leave bare flames under this hood.



In case of any damage to power cable, replace the broken cable with a new one by qualified personnel.



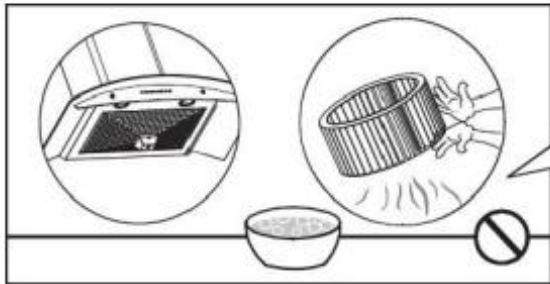
Clean the appliance by following the instruction given in the manual.



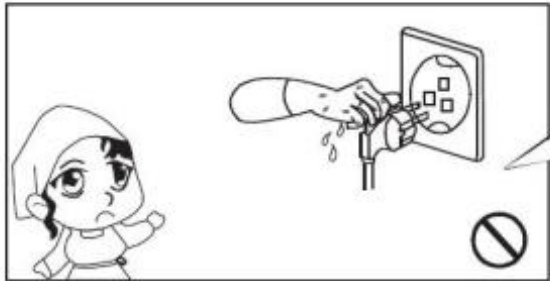
Put on protective glove before you start to clean the hood. Remove the components gently when cleaning.



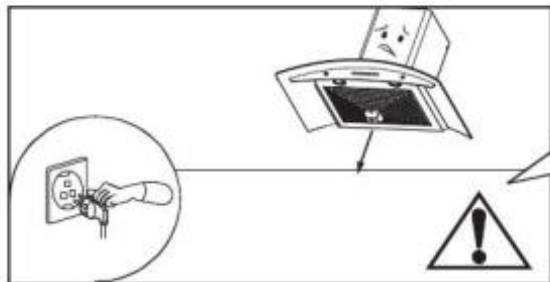
Never wash the control switch with water or any kind of liquid. Liquid might cause electrical problem to the hood.



Cleaning of the motor fan should be undertaken by a qualified personnel be careful to avoid any distortion of the fan during cleaning.



Never pull the plug out of the power supply with wet hand to avoid the possibility of electric shock.



Disconnect the cooker hood from the power supply if this appliance will not be used for a long period of time.

TROUBLESHOOTINGS

Malfunctions	Causes	Action
Light bulb malfunction while motor is operating	Light bulb is not install	Contact service centre & request technician to: - install the light bulb - replace new light bulb
	Light bulb is not install correctly	
	Light bulb broken	
Both motor & light bulb are malfunction	Plug & socket are damage or might not connect correctly	Repair/ change new plug or socket
	Display board might damage or might not connect correctly	
Light bulb is on but motor is not operating	Thermal protector damaged	Change motor
	Capacitor damaged	Change capacitor
	Motor damaged	Change motor
Hood is shaking	blower not installed correctly	Adjust blower
Higher noise	Ducting cover not installed correctly	Check & tighten ducting cover
Weak Suction	Hood installed too far from hob	Adjust the distance
	Air/ wind convection	slightly open door/ window
	Hose installed too long, connection point did not seal correctly, too many bending or deform	Check & install the hose correctly
	Butterfly vane is close	Remove the tape, adjust hose, no blockage
	Hob install too far from cooker hood	Adjust hob position
	Low power supply to hood	Check the flow of power supply 200-240V

WARRANTY CARD

WARRANTY CONDITIONS

Subject to following Term & Conditions, this equipment is guaranteed against defective material & manufacturing defects by Fiamma Trading Sdn Bhd for a period of twelve (12) months from the date of original purchase. Fiamma Trading Sdn Bhd reserves the right to change these terms & conditions without prior notice.

Terms & Conditions:-

- 1) This warranty is valid & provided that warranty card is completed with authorized dealer's stamp from the date of original purchase and in the territory of Malaysia only.
- 2) This warranty covers repair or, at the option of Fiamma Trading Sdn Bhd, replacement of any parts proven to be defective due to defective workmanship or material provided that the product was purchased from an authorized dealer of Fiamma Trading Sdn Bhd.
- 3) This warranty does not cover the damage resulting from:
 - (a) Any unauthorized disassembly, service repair, alteration or modification being carried out.
 - (b) Abnormal voltage or the use of generator and/or used not in accordance with the Operating Manual / User Manual.
 - (c) Misuse, abuse, negligence or accident howsoever caused.
 - (d) Normal wear or tear.
 - (e) Rough handling & transportation.
 - (f) Commercial / public use e.g. hotel, laundry, college, university, etc.
- 4) This warranty does not cover the following accessories:
 - (a) Burner Caps/Supports (b) Cast Iron Grib (c) Knobs (d) Body Work (e) Light Bulb (f) Charcoal / Filter (g) Cover (h) Glass Cover / Screen (i) Trays/Shelves (j) Hose
- 5) This warranty is considered null & void in the events if:
 - (a) Any item contained in this warranty card has been tempered with or altered in any way without the prior written consent of Fiamma Trading Sdn Bhd. Request for warranty services within the warranty period must be accompanied with this warranty card & proof of original purchase.
 - (b) Any time during the warranty period, any part / parts of this equipment is / are removed, altered, tempered with, adjusted, modified, dismantled, repaired or handled in any way whatsoever by any person / persons not authorized by us.
 - (c) The serial number of the product has been defaced or removed.
- 6) Warranty for WINE CHILLER compressor is (5) five years, gas refill and labor charges are excluded.
- 7) In the event of defects covered by this warranty arising during the warranty period, the purchaser shall be fully responsible for the due delivery to our dedicated service centre of the equipment (expect for the refrigerator, washing machine, ovens, cooker hood, gas cooker, dishwasher, dryer, built-in hob, freezer, water heater) for any work which shall need to be done pursuant to this warranty & subsequent collection thereof of the equipment after the said work has been done.
- 8) This warranty is in lieu of any, and all other warranties expressed or implied warranty of merchantability or fitness for a particular purpose. Fiamma Trading Sdn Bhd assumes no liability for the breach of the warranty beyond correcting the breach in the manner described above. In no event shall Fiamma Trading Sdn Bhd be liable for consequential losses or damages, including loss of use or loss of profits resulting from the product.



FOR OFFICE USE

此处贴条码流水号55X20MM

Model Name

Serial No
Barcode :

Customer's Name (In Block/Full Name)

Date of Purchase : DAY MTH YR

Customer's Address (Full Address) :

PostCode : State :

Customer's Tel No : (H) - (O) -

Customer's Email : (H/P) -

Authorized dealer's stamp

Fiamma Trading Sdn. Bhd.

Customer Signature

Customer **Care**

AFTER-SALES SERVICE:

Exact Quality Sdn. Bhd.

Hotline: **03-6286-9000**

Email: **eqservice@fiamma.com.my**

OPERATION HOURS

08:30am - 06:00pm

(Monday - Friday, except public holiday)

Our **Warranty**

6
yrs
Warranty

FOR HOOD MOTOR ONLY

18
mths
Warranty

FOR ALL PARTS

(EXCLUDING ACCESSORIES)

1
yr
Warranty
Extension

**1-year
Warranty
Extensions
When Register
Online!**

Online Registration

1. Log on to www.rubine.com.my
2. Click on 'Support', followed by 'Products Warranty Registration' to proceed. You're required to sign up as a member.
3. Please fill up the necessary information, tick on the checkbox and click 'Next'.
4. You'll receive a notification of warranty registration confirmation via email.
5. Your warranty will be automatically extended for another 1 year upon registration online. Please keep your online warranty certificate for reference.

rubine.com.my



FIAMMA TRADING SDN BHD 330476-P (A member of Fiamma Holdings Berhad)

9-2, Wisma Fiamma, No.20, Jalan 7A/62A, Bandar Manjalara, 52200 Kuala Lumpur. Tel: 03-6279 8943